

WEEKLY REPORT

Keep an Eye on Changing Market Place.....

24, NOV 2012

Top Stories This Week

- ≈ Cabinet okays 5 percent mandatory ethanol blending in petrol -Cabinet okays market-determined price for ethanol - Ethanol shortfall for fuel to be met via import.
- ≈ Cabinet okays NMDC 's acquisition of 50 percent stake in legacy iron ore -NMDC buys 50% stake in legacy iron ore for Rs 99.63 crore.
- ≈ Indian Hotels may hike offer for Orient-Express Hotels.
- ≈ Government approves new drug pricing policy to cap prices of 348 drugs.
- ≈ Bharti Infratel IPO likely in December aims to raise Rs 4000 crore.
- ≈ October telecom data - Bharti Airtel adds 4.91 lakh GSM users as against loss of 9.8 lakh (MoM), -Vodafone adds 4.8 lakh GSM users as against loss of 6.8 lakh (MoM), - Idea Cellular adds 2.39 lakh GSM users as against loss of 5.08 lakh (MoM), -Uninor lost 11 lakh GSM users as against addition of 32,662 (MoM).

Weekly Indices Change

Index	Close	P. Close	Chg. (%)
SENSEX	18506	18309	1.08
NIFTY	5626	5574	0.93
MIDCAP	6597	6658	(0.92)
SMLCAP	7057	7110	(0.75)
METAL	9801	9859	(0.59)
OIL&GAS	7987	8066	(0.98)
AUTO	10558	10400	1.52
TECK	3399	3359	1.19
BANKEK	13178	13020	1.21
IT	5733	5669	1.13
FMCG	5815	5669	2.58
HC	7703	7686	0.22
PSU	7003	7090	(1.23)
CD	7476	7465	0.15
POWER	1920	1943	(1.18)
CG	10630	10635	(0.05)
REALTY	1869	1889	(1.06)

Global Indices

DOW	13009	12588	(3.34)
NASDAQ	2966	2853	(3.96)
FTSE	5819	5605	(3.82)
NIKKEI	9366	9024	(3.79)
HANGSENG	21913	21159	(3.56)

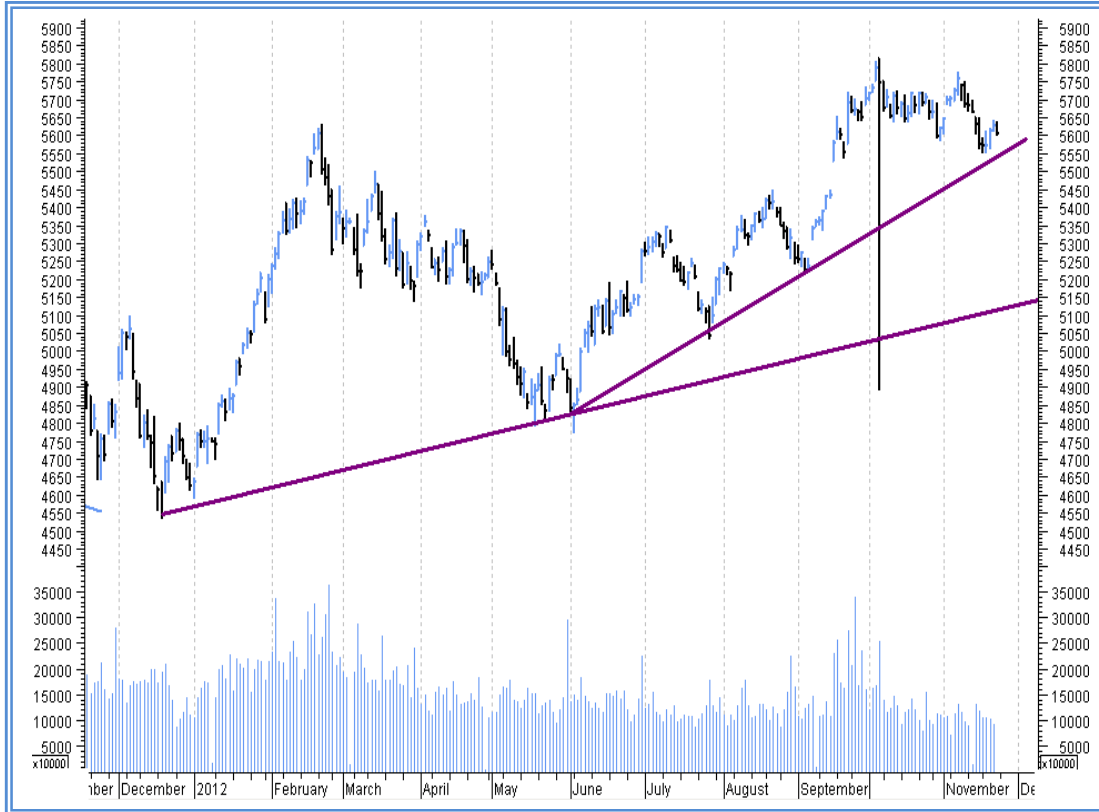
Top Gainers Weekly

Scrip	Price	% Chg
HERITAGFOOD	527	30.98
JETAIRWAYS	505	27.16
RAMANEWS	14.95	20.56
AANJANEYA	770	17.92
BLUEDART	1989	17.73

Top Losers Weekly

Scrip	Price	% Chg
HINDCOPPER	213	15.04
MANIND	142	14.91
HONAUT	2448	14.00
PRADIP	34	12.72
OPTOCIRCUT	100	12.03

Nifty Corner



Support & Resistance						
S3	S2	S1	Nifty	R1	R2	R3
5450	5500	5550	5626	5710	5750	5800
Moving Averages						
20DMA		50DMA		100DMA		200DMA
5655		5650		5465		5330

Market Commentary

The market rose last week as investors bought shares ahead of the winter session of the parliament that began on Thursday, 22 November 2012. The market sentiment was also boosted by data showing that foreign institutional investors (FIIs) remained net buyers of Indian stocks in November 2012. For the next week Nifty likely to trade in the range between 5750 - 5800 in the upper side and 5500 - 5450 in the lower side.

Stocks at 52 wk High

Scrip	Cmp
AANJANEYA	770
HCLTECH	636
HERITAGFOOD	527
JETAIRWAYS	505
GITANJALI	447

Stocks at 52 wk Low

Scrip	Cmp
EMKAY	20
HFCL	10
HINDCOMPOS	349
ORCHIDCHEM	97
NIPPOBATRY	289

FII Activity

Date	Figures in crore
19-11	787.4
20-11	686.1
21-11	173.7
22-11	262.6
23-11	366.37
NET	2276.17

DII Activity

Date	Figures in crore
19-11	-502.6
20-11	-11.53
21-11	-133.08
22-11	-164
23-11	-184.27
NET	-995.48

Weekly Stock Idea

Scrip	B/S	Cmp	Tgt
TATAPOWER	B	102	109
RELCAPITAL	B	382	410
SUNILHITECH	B	68	78
GRUH	B	203	215
CAREERP	B	170	195

Buy on dips & Sell on rise with Stop-loss of 3%

Volume Breakout Stocks

Scrip	Cmp
BLUEDART	1989
HOTELRUGBY	27
MUKANDLTD	28
SHALPAINTS	134
HINDCOPPER	213

Week Ahead

MAJOR RESULTS THIS WEEK:

26 NOV: BAJAJHIND, AMAR.

27 NOV: ESCORTS, ELECTHERM, EDL.

29 NOV: MRF, VARUNSHIP.

30 NOV: BFUTILITIE, WELSPUNIND, WELGLOB, TULIP.

VISIT US AT: WWW.INDIRATRADE.COM

Disclaimer

This report is for private circulation within the Indira Group. This report is strictly confidential and for information of the selected recipient only and may not be altered in any way, transmitted to, copied or distributed, in part or in whole, to any other person or to the media or reproduced in any form. This report should not be construed as an offer or solicitation to buy or sell any securities or any interest in securities. It does not constitute a personal recommendation or take into account the particular investment objectives, financial situations, or any such factor. The information, opinions estimates and forecasts contained here have been obtained from, or are based upon, sources we believe to be reliable, but no representation of warranty, express or implied, is made by us to their accuracy or completeness. Opinions expressed are our current opinions as of the date appearing on this material only and are subject to change without notice.